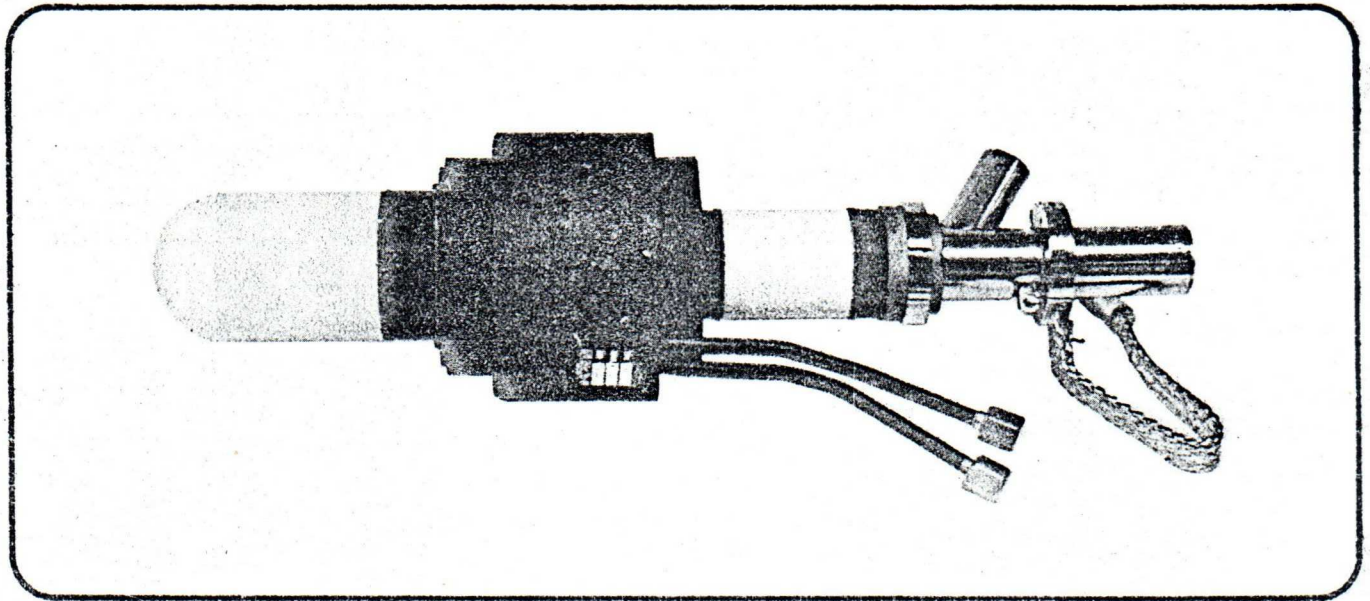


# **RM-101/ MA-2855**

**CW L-Band Magnetron**

**Bulletin 1568**



## **DESCRIPTION**

A high power CW Magnetron at 915 MHz using a water cooled vane and strap anode.

## **APPLICATIONS**

Industrial Microwave Heating Systems.

MICROWAVE ASSOCIATES, WATSONVILLE, INC. d/b/a

**RELMAG DIVISION • MICROWAVE ASSOCIATES, INC.**

For More Information Contact: **RELMAG DIVISION • Watsonville, California • Phone 408-722-7181**



**Microwave Associates, Inc.** Burlington, Massachusetts Tel. (617) 272-3000

Western Union Fax  
TWX: 710-332-6789  
Telex: 94-9464

# SPECIFICATIONS

## Electrical Characteristics

CW Power	25-45 kW
Fixed Frequency	915 MHz
Electro Magnet	±5

## Mechanical Characteristics

Size	See Outline Drawing
Weight	16 lbs./7.26 kg.
Mounting Position	Vertical
Output Connector	Antenna

## Operating Conditions

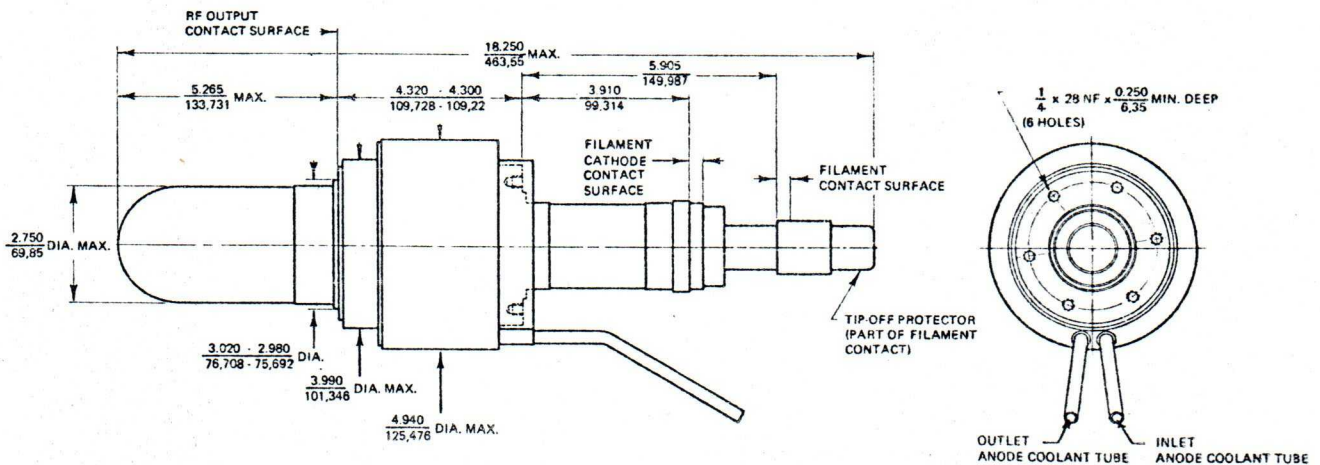
Heater Voltage*	12.5
Heater Current	115A
Preheat Time	2 Min.
Voltage	14 kV Max.
Current	2.8 A
Duty Cycle	CW

## Environmental Characteristics

Cooling	Liquid
Outlet Water Temperature	70°C Max.

\*Heater voltage is reduced during oscillation to a value specified on each magnetron.

# OUTLINE DRAWING



NOTE:

