

Beam Power Tube

CERMOLOX Matrix Cathode 13 kV, 30 Amp.
Ruggedized Pulse Modulator Conduction Cooled

ELECTRICALHeater^a for Matrix Type, Oxide-Coated

Unipotential Cathode:

Voltage (ac or dc)	5.5	V
Current at 5.5 volts	17.3	A
Minimum heating time	180	s
Mu-Factor, grid No. 1 to grid No. 2	16	

MAXIMUM RATINGS, Absolute-Maximum Values

DC Plate Voltage	13	kV
Instantaneous Peak Plate Voltage	17	kV
(Pulse duration < 0.1 s)		
DC Peak Pulsed-Grid-No. 2 Voltage	1000	V
DC Grid-No. 1 Voltage	-300	V
Peak Positive-Pulse Grid-No. 1 Voltage	100	V
Peak Plate Current	30 ^c	A
DC Plate Current	1.5	A
Plate Dissipation (Average)	1.5	kW

MECHANICAL

Operating Position Any
 Weight (Approx.) 1-1/2 lb (0.68 kg)

THERMAL^b

Terminal Temperature (All Terminals) 250 Max. °C

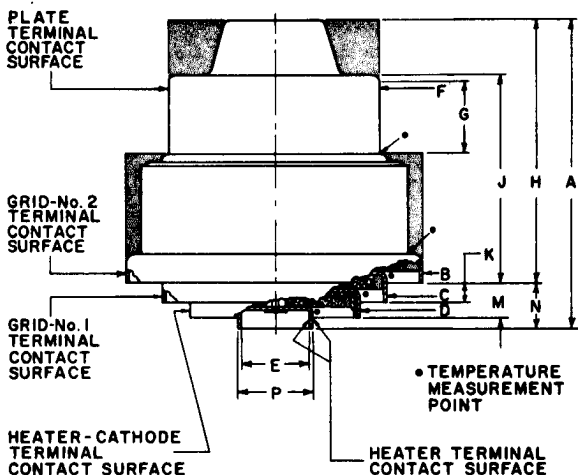
^aSee *Electrical Considerations—Filament or Heater*, under *RCA Transmitting Tube Operating Considerations* given at front of this section.

^bSee *dimensional outline* for temperature measurement points.

^cKeep all stippled regions clear. Do not allow contacts or circuit components to protrude into these annular volumes.

Detailed performance and application information is available through your RCA Sales Office, Distributor, or write to RCA Commercial Engineering, Harrison, N.J. 07029.

DIMENSIONAL OUTLINE



CERAMIC



FOOTNOTE (c)

92LM-1040V

DIMENSION	INCHES	MILLIMETERS
A	3.31 Max.	84.1 Max.
B Dia.	3.020 ± .010	76.71 ± .25
C Dia.	2.317 ± .010	58.85 ± .25
D Dia.	1.717 ± .007	43.61 ± .18
E Dia.	0.713 ± .012	18.11 ± .30
F Dia.	2.265 ± .003	57.53 ± .08
G	0.725 Min.	18.42 Min.
H	2.780 ± .040	70.61 ± 1.02
J	2.185 ± .030	55.50 ± .76
K	0.200 ± .025	5.08 ± .64
M	0.370 ± .030	9.40 ± .76
N	0.460 ± .030	11.68 ± .64
P Dia.	0.755 ± .010	19.18 ± .25