

# OUTPUT PENTODE

# PL38 PL38M

Output pentode primarily intended for use as line time base output valve in television receivers with series connected heaters.

## HEATER

Suitable for series operation, a.c. or d.c.

$I_h$	300	mA
$V_h$	30	V

## CAPACITANCES

	PL38M	PL38	
$C_{in}$	18	18	pF
$C_{out}$	9.5	6.5	pF
$C_{a-g1}$	<1.0	<1.2	pF

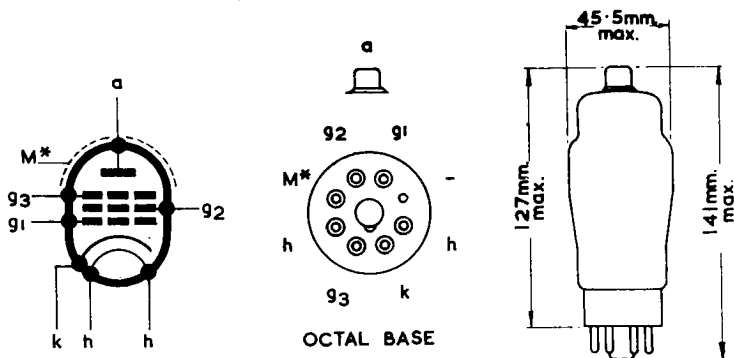
## CHARACTERISTICS

$V_{a1}$	200	V
$V_{g2}$	200	V
$V_{g1}$	-5.5	V
$I_a$	75	mA
$I_{g2}$	9.0	mA
$g_m$	13.5	mA/V
$r_a$	20	k $\Omega$
$\mu_{g1-g2}$	16.5	

## LIMITING VALUES

$V_{a(b)}$ max.	1.2	kV
$V_a$ max.	800	V
$V_{a(pk)}$ max.	8.0	kV
$V_{g2(b)}$ max.	800	V
$V_{g2}$ max.	400	V
$p_a$ max.	25	W
$p_{g2}$ max.	8.0	W
$I_k$ max.	200	mA
$V_{g1}$ max. ( $I_{g1} = -1.0.3 \mu A$ )	-1.3	V
* $R_{g1-k}$ max. ( $p_a < 25W$ )	500	k $\Omega$
* $R_{g1-k}$ max. ( $p_a < 9W$ )	800	k $\Omega$
$V_{h-k}$ max.	200	V
$R_{h-k}$ max.	20	k $\Omega$

\*For self bias operation.

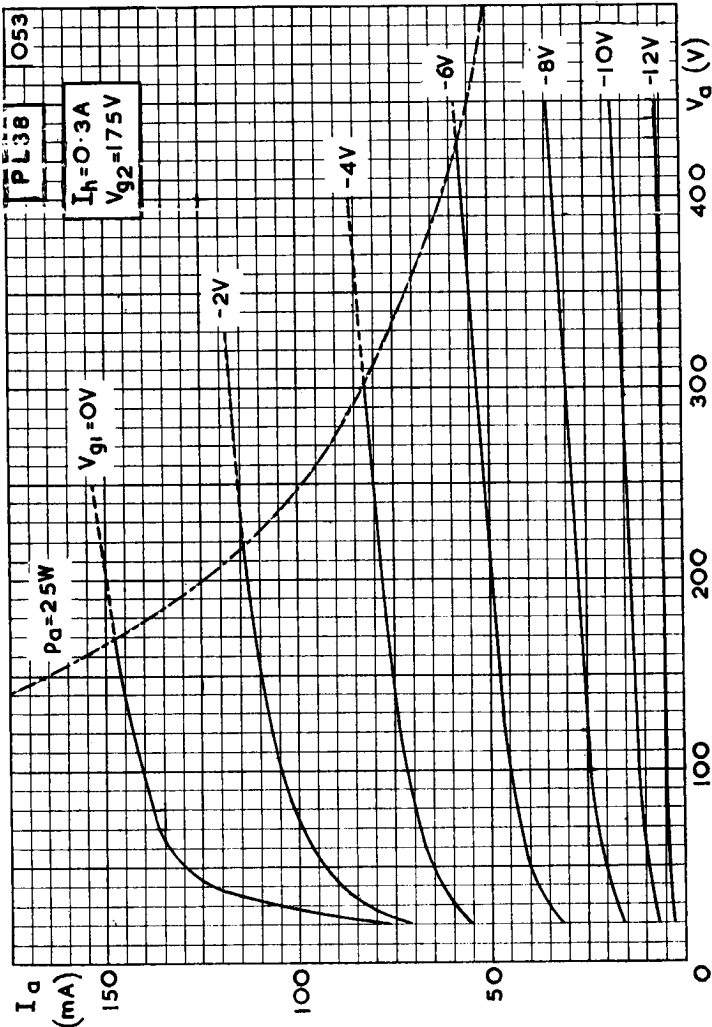


\* External metallising on type PL38M only.

732

# PL38 PL38M

## OUTPUT PENTODE



ANODE CURRENT PLOTTED AGAINST ANODE VOLTAGE WITH CONTROL-GRID VOLTAGE AS PARAMETER AT  $V_{g2} = -175V$