

POWER AMPLIFIER TRIODE TYPE 7748

The type 7748 is a three electrode tube designed for service as an oscillator, amplifier or modulator in Class B & C operation. The anode is water cooled with an integral water jacket and is capable of dissipating 35 kilowatts during C.C.S. The cathode is a thoriated tungsten filament which may be operated either with d-c or single-phase a-c. Maximum ratings apply to 30 megacycles.

ELECTRICAL:

Cathode	Thoriated Tungsten Filament
Filament:	
Voltage	8.0 Volts
Current	150 Amperes
Minimum Heating Time	15 Seconds
Amplification Factor	20
Direct Interelectrode Capacitances:	
Grid to Plate	79 μft
Grid to Filament	71 μft
Plate to Filament	4 μft

MAXIMUM RATINGS:

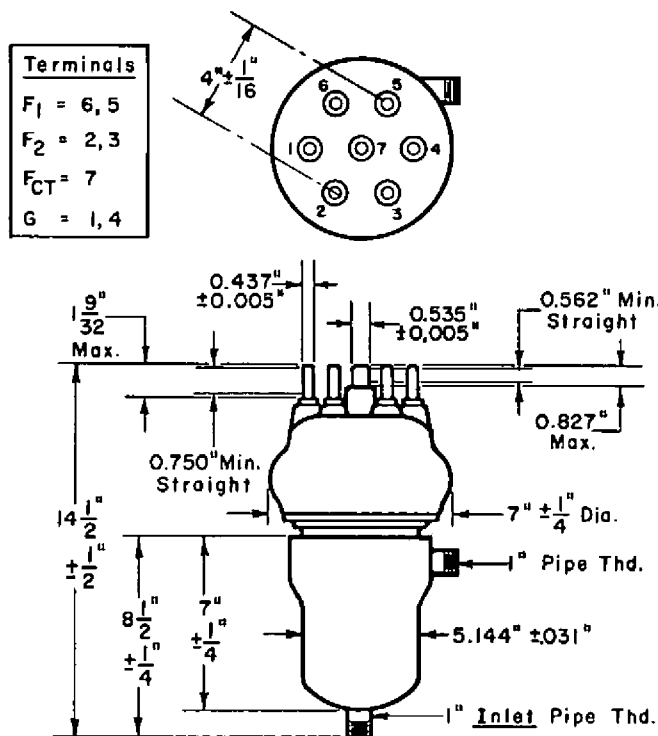
Absolute Maximum Values		
DC Plate Voltage	12.5 max.	Kilovolts
DC Plate Current	10 max.	Amperes
DC Grid Voltage	-3000 max.	Volts
DC Grid Current	1.25 max.	Amperes
Plate Power Input	80 max.	Kilowatts
Plate Dissipation	35 max.	Kilowatts

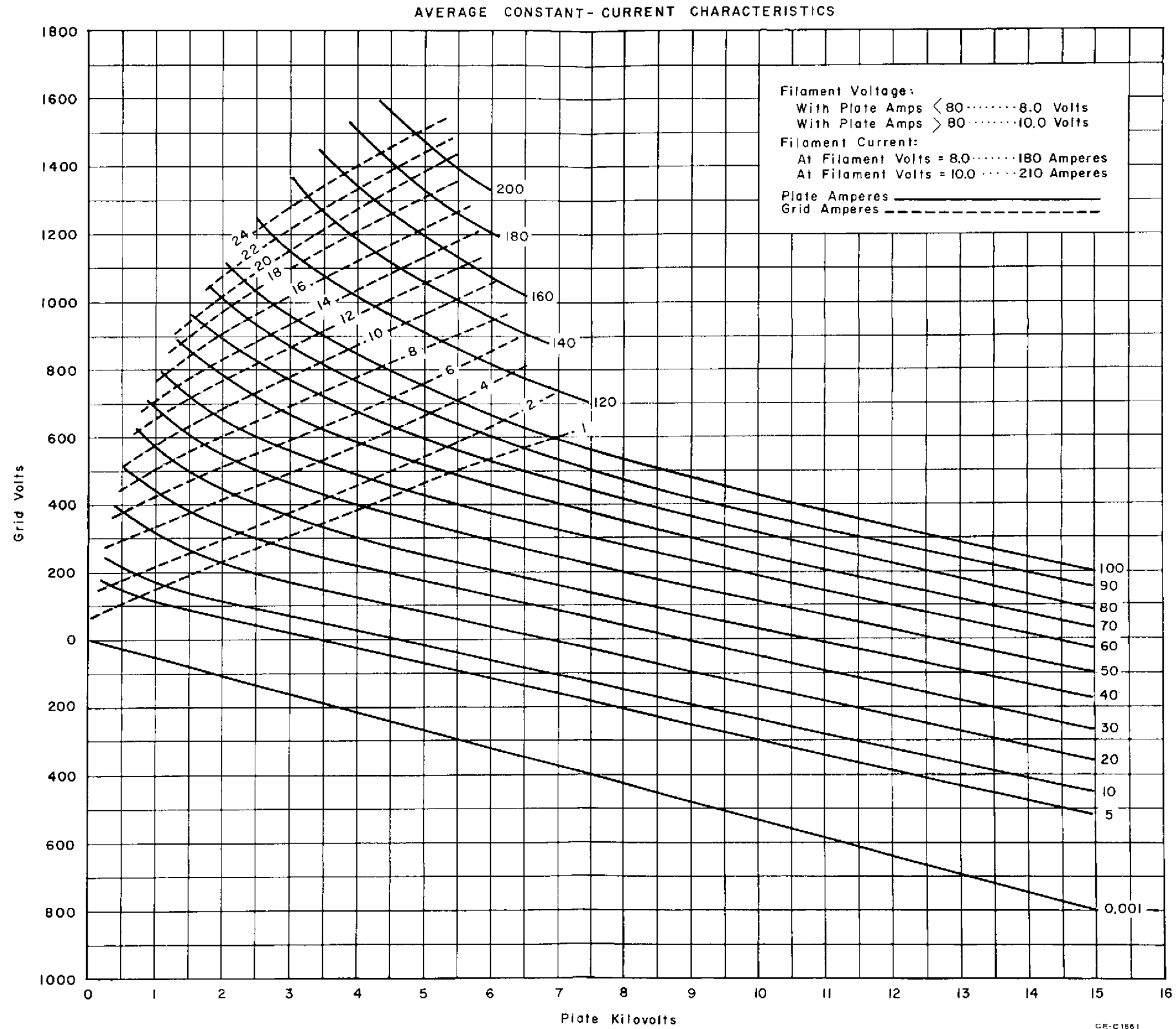
TYPICAL OPERATING CHARACTERISTICS:

DC Plate Voltage	7500	10000	12500	Volts
DC Grid Voltage	-800	-1100	-1300	Volts
Peak R.F. Grid Voltage	1250	1500	1700	Volts
DC Plate Current	5.5	4.7	4.25	Amperes
DC Grid Current	0.875	0.58	0.59	Amperes
Driving Power	1050	850	970	Watts
Power Output	33.5	40	46.5	Kilowatts

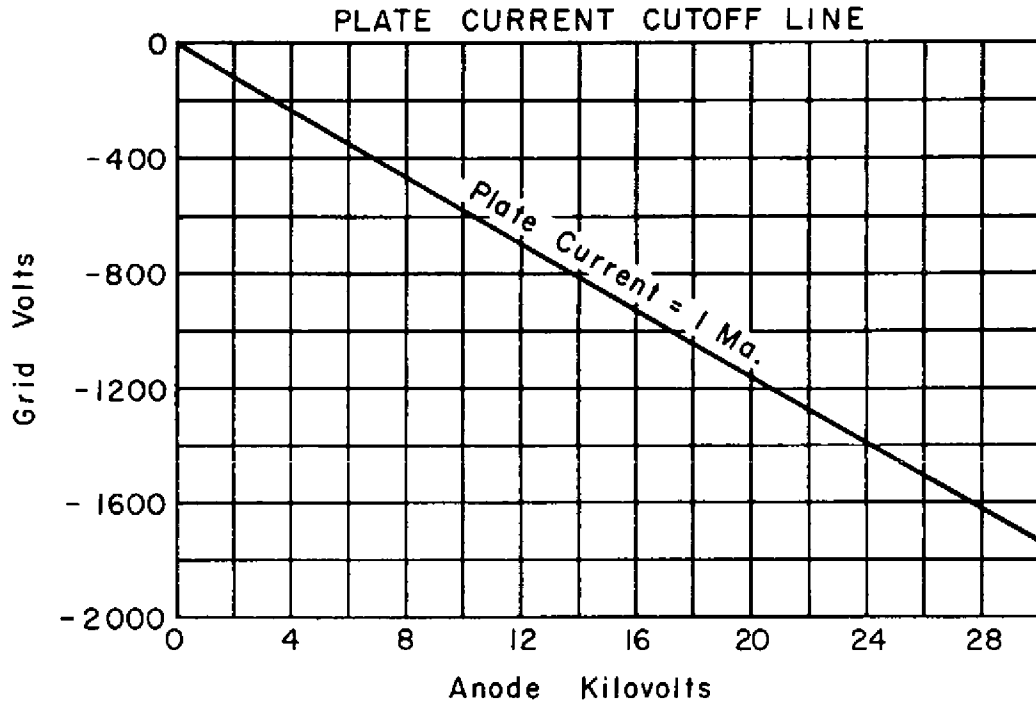
MECHANICAL:

Mounting Position	Vertical, Anode Down
Type of Cooling	Water
Water Flow Required	30 GPM
Static Pressure (at 30 GPM)	8 PSI
Maximum Outlet-Water Temperature	70 °C
Maximum Grid and Filament Seal Temperature	180 °C
Net Weight	18 Pounds





GE-C1881



CE-A1675